

# PRODUCT SHEET

## BMCLPE75

Semi-automatic retractable bollard  
CYLINDER 200x750



The semi-automatic retractable bollard is a system developed for very occasional access. For this reason it is recommended for situations with low access opening frequency.

The semi-automatic bollard is also the ideal access control solution in areas without an electricity supply.

**Material:** Cast iron cover and head

**Dimensions:** Ø200 mm - H750 mm    **Weight:** 112 kg

### Finition

Zinc-based primer as standard reinforcing corrosion-resistance

Matt finish thermosetting polyester powder top coat (RAL7016 standard)

Class II reflective band in white

### Mode of operation

The bollard is moved using a **T11 Imprint** key which releases the mechanism.

One push on the head of the bollard is all it takes to make it descend to flush with the ground, where it automatically locks in position. Then, with a turn of the key, the bollard rises automatically and locks in the up position.

The key opening is protected by a bronze cover plate stopping the ingress of dust or gravel.

### Reinforced push-to-release bar and lock bolt

### In compliance with France's NFP98-310 standard

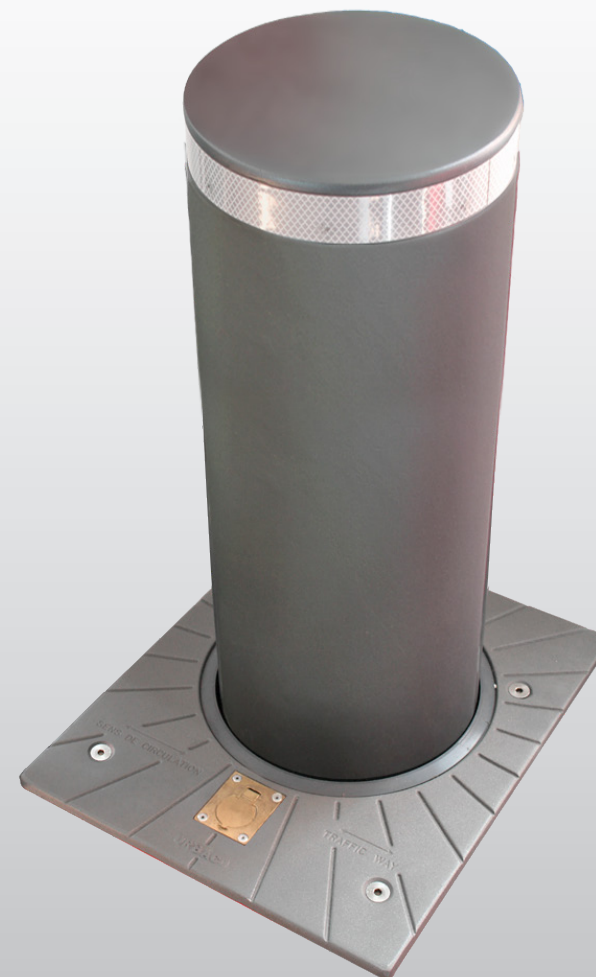
The chosen site must be out of the usual passage of vehicle wheels.

### Options

- Choice of RAL paint colours
- Specific imprint (T14, demi-lune, pentagon, type A)
- Specific protective cover (Service key or captive key)
- Class II reflective band (red or yellow)
- Extra key
- Anti-vandalism screws

### Accessories

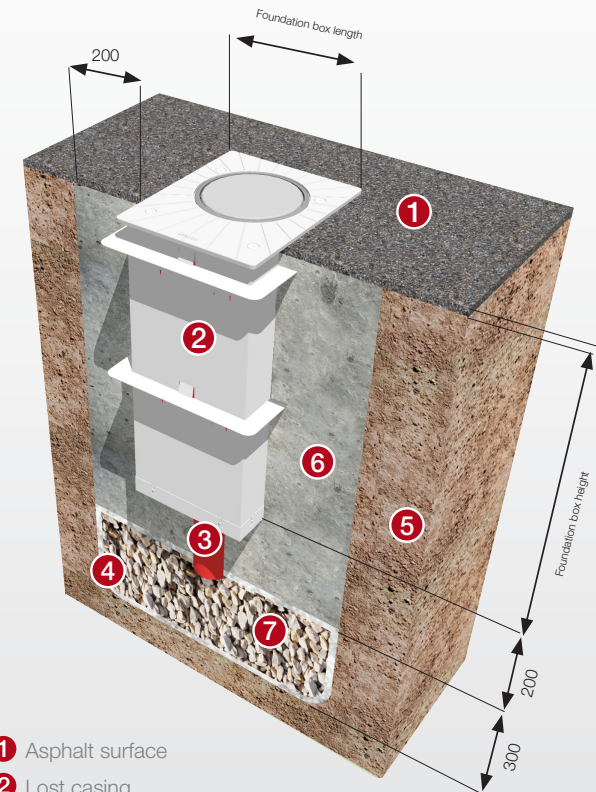
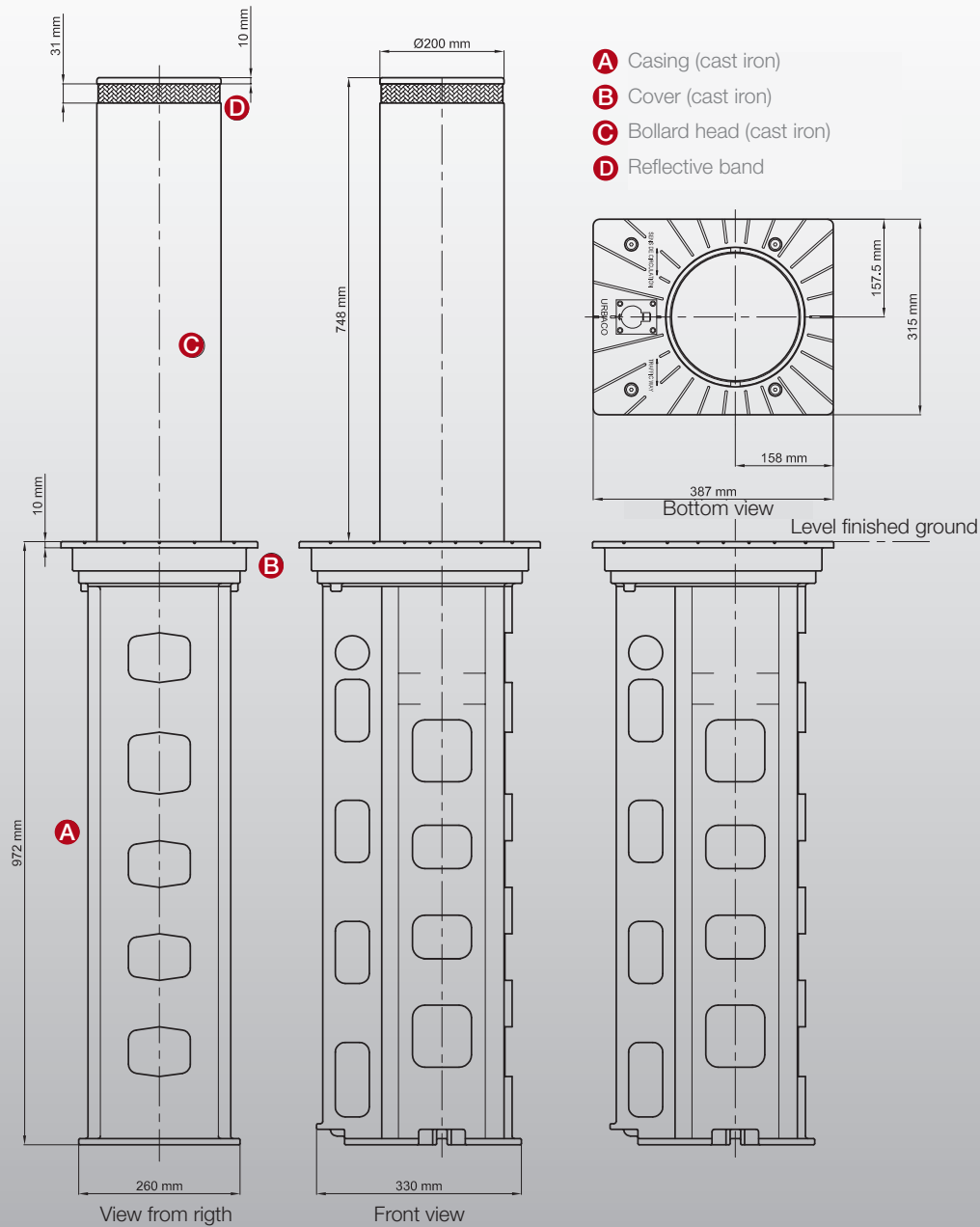
- Lost casing
- Accessories' kit (2 lifting rings, 1 technical manual)



Ministry of Infrastructure and Transport  
Approval for installation on the public highway  
Protocol No. 32658, of 1 April 2009

## BMCLPE75

Semi-automatic retractable bollard  
CYLINDER 200x750



- 1 Asphalt surface
- 2 Lost casing
- 3 PVC Ø100mm
- 4 Geotextile underlayer
- 5 Natural permeable soil
- 6 3000 PSI or 350 to 400 kg/m<sup>3</sup> concrete
- 7 Drain: must be able to drain 20 litres of water in 5min