

# PRODUCT SHEET

Semi-automatic retractable bollard **G6 EVO**

Semi-Automatic



# CAME URBACO

**DIMENSIONS** ☐ Ø200 H750 | ☐ Ø250 H750

## GENERAL DESCRIPTION

The semi-automatic bollard is adapted to the low-traffic areas management such as a square opened a few times per months for particular events, a reserved area. The semi-automatic bollard is also the best access control solution in places where there is no electrical power supply.

**Lock protection:** The lock is protected by a bronze hatch preventing any dust or gravel from penetrating inside.

**Standard imprint key:** T11

**Safe operation:** Reinforced push-to-release bar and lock bolt

**Reflective band:** Class II (white)

The semi-automatic retractable bollard must be installed out of the wheel arch.

## MONOBLOC® DESIGN

**Bollard head, casing and cover made of 11mm average thick cast iron material.** These parts are cast as one single piece, without any weld nor wear part.

### Reliability

4.5 million of operations without any failure neither part replacement (Up to 1,200 operations per day over 10 years).

### Longevity

G6 EVO bollards are intended to withstand repeated impacts, rain, frost, sand, dust, solvents agents...

### 10-year warranty

10-year warranty on cast-iron material bollard head, casing and cover, even after a 2.5 tons vehicle collision at 55 km/h\*.

\* See the "Warranty" chapter in our General Terms of Sale



**ISO EN 124 - E600 Class** - Accepted vertical load: 60T per axle. Can be installed in areas that take heavy loads (docks and airports).

**In compliance with NFP98-310 standard** - Regarding characteristics and performances of automatic, semi-automatic and manual retractable bollards.

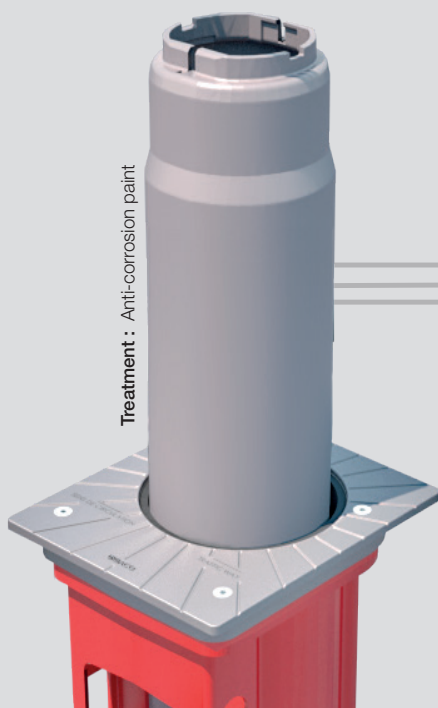
**In compliance with the French PMR decree** - All dimensions comply with the French decree of 18 September 2012 regarding technical specifications for road and public area accessibility, enabling Persons with Reduced Mobility to have the best possible day-to-day travel.

## G6EVO, THE CONCEPT

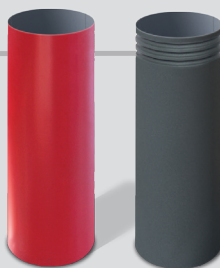
The G6 EVO bollard is equipped with an innovative interchangeable sleeve system for customizing the aesthetics of access points and refurbishing any damaged bollard heads in less than 5 minutes. The bollard head is made of cast-iron material, which provides high impact resistance, covered with a steel or stainless steel sleeve. The new G6 EVO bollard has been designed to make on-site sleeve replacement easy and quick, without need of hoisting device.



### CAST IRON BOLLARD HEAD



### PAINTED SLEEVE



**Material :** Steel  
**Design :** Cylinder or Chateaufort  
**Treatment :** Zinc-based primer as standard reinforcing corrosion-resistance  
**RAL paint :** Matt finish thermosetting polyester powder top coat (RAL7016 standard)

### STAINLESS STEEL SLEEVE



**Material :** 316L Stainless Steel  
**Design :** Cylinder or Chateaufort  
**Treatment :** Polish and satin-finished 316L stainless Steel

### CUSTOMIZED SLEEVE



**Material :** Steel (Stainless Steel on request)  
**Design :** Cylinder  
**Treatment :** Zinc-based primer as standard reinforcing corrosion-resistance  
**Customization :** Customization with a logo, text, texture, advertising, or image.  
**Finishing :** anti-abrasion protection system

# PRODUCT SHEET

Semi-automatic retractable bollard **G6 EVO**

Semi-Automatic



**CAME**   
**URBACO**

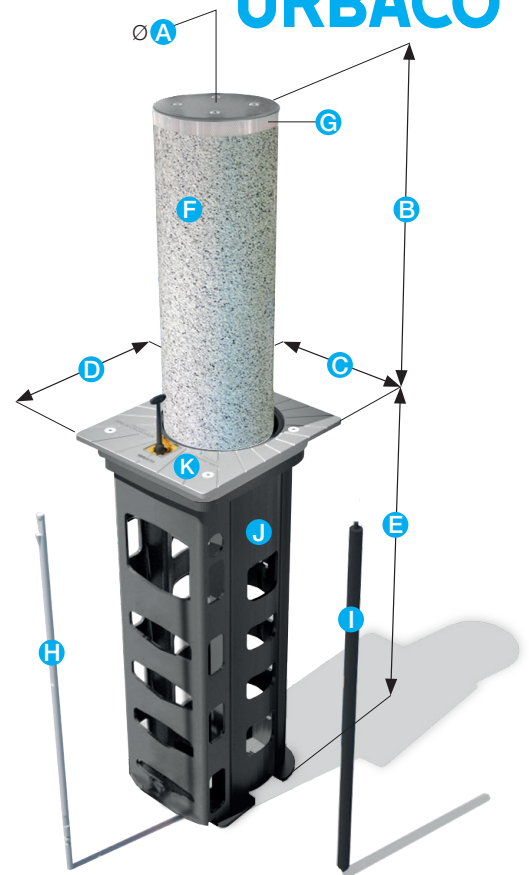
## DIMENSIONS (mm)

	A	B	C	D	E	Weight
<input type="checkbox"/> BMEVOE75	200	750	317	390	972	109 kg
<input type="checkbox"/> BMEVOF75	250	750	385	450	972	148 kg

## IMPACT RESISTANCE

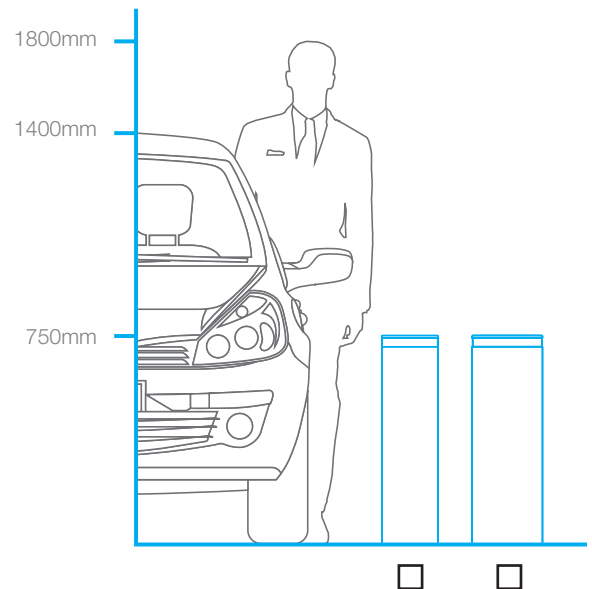
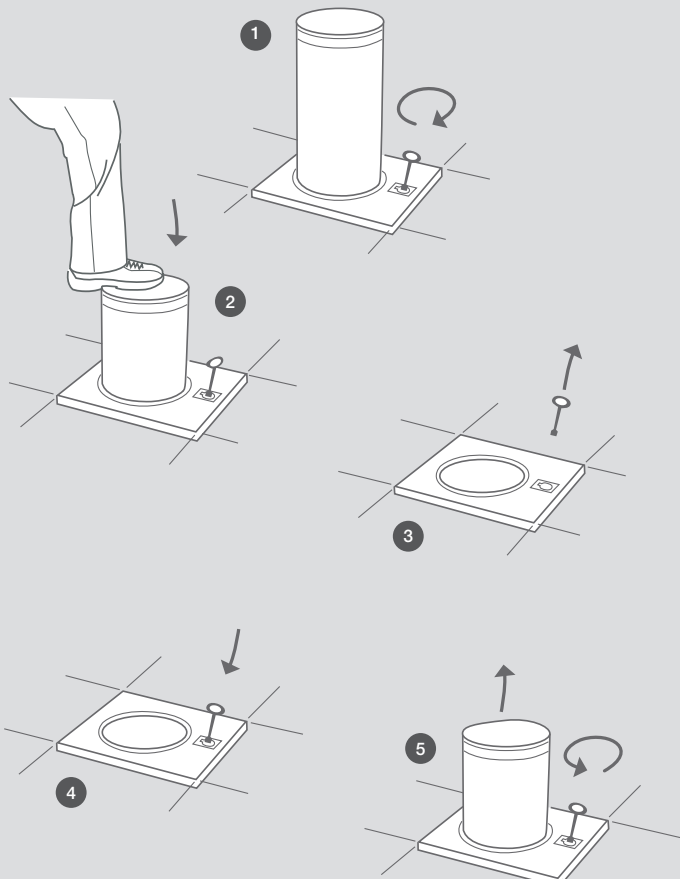
	kJ	Vehicule weight	Speed collision
<input type="checkbox"/> BMEVOE75	96	1,2 Ton	50 km/h
<input type="checkbox"/> BMEVOF75	241	2,5 Tons	55 km/h

- F** Bollard head with customized sleeve
- G** Class II reflective tape
- H** Reinforced push-to-release bar and lock bolt
- I** Gas cylinder
- J** Casing
- K** Cover



**Model shown:** BMEVOF75 - **Options:** customized steel sleeve, white class II reflective tape, blue illuminated LEDs ring, top cover with locking screws and light diffusers.

## OPERATING PRINCIPLE :



- 1** Insert the key in the lock and turn the key clockwise : the bollard unlocks.
- 2** Push the bollard down
- 3** The bollard locks. Remove the key.
- 4** Insert the key in the lock.
- 5** Turn the key counter-clockwise. The bollard unlocks automatically, rises up and remains locked in up position.

# OPTIONS

Semi-automatic retractable bollard **G6 EVO**

Semi-Automatic

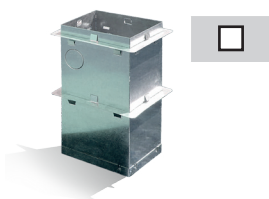


**CAME**   
**URBACO**

## Lost casing

The lost casing has been designed to preserve a clean and free space during the civil works. It also ensures a proper bollard installation.

### Standard lost casing



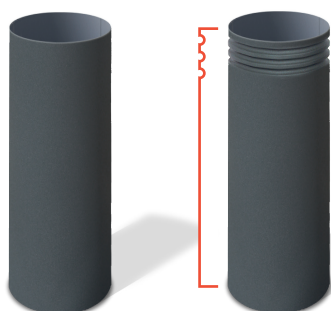
### Lost casing with finishing frame



☐ Vandal-proof

## Sleeve

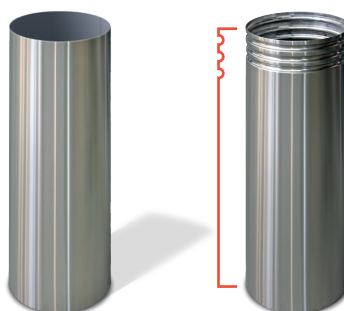
### Painted steel sleeve\*



Cylinder (standard)

Chateaufort

### Stainless steel sleeve



Cylinder

Chateaufort

### Customized steel sleeve

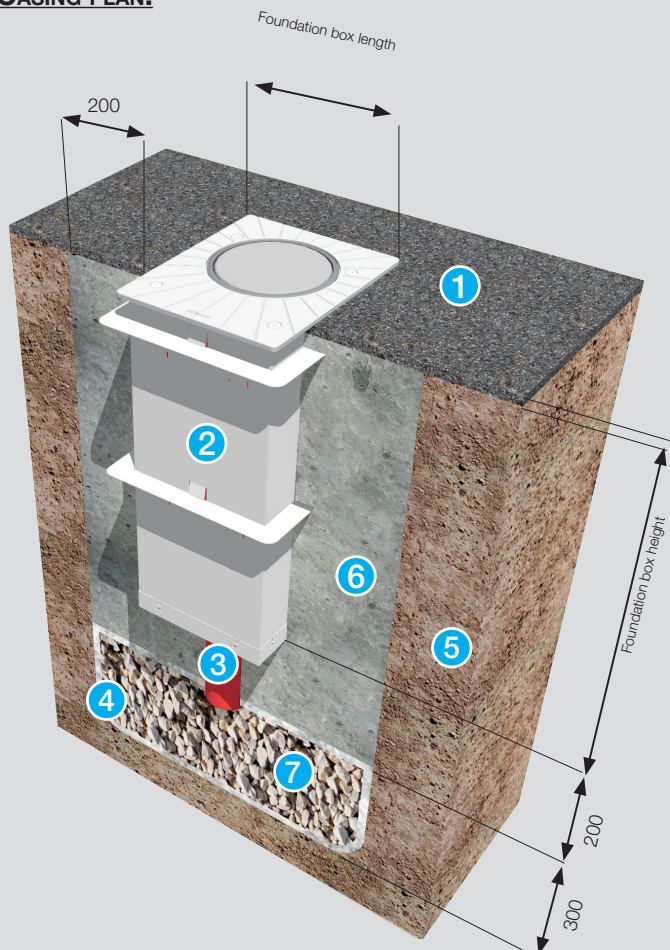


Cylinder

	<input type="checkbox"/>	<input type="checkbox"/>	<input type="checkbox"/>	<input type="checkbox"/>	<input type="checkbox"/>
Ø200 H750	<input type="checkbox"/>	<input type="checkbox"/>	<input type="checkbox"/>	<input type="checkbox"/>	<input type="checkbox"/>
Ø250 H750	<input type="checkbox"/>	<input type="checkbox"/>	<input type="checkbox"/>	<input type="checkbox"/>	<input type="checkbox"/>

\*RAL 7016 in standard, others RAL on request

## CASING PLAN:



## Visual signalling



### Reflective tape colors:

- Painted steel sleeve: White
- Stainless steel sleeve: Yellow
- Option: Red

## Top cover

### Without light diffusers



Visible screws	Steel (standard)*	Stainless Steel 316L
Ø200	<input type="checkbox"/>	<input type="checkbox"/>
Ø250	<input type="checkbox"/>	<input type="checkbox"/>

\*RAL 7016 in standard, others RAL on request

## Miscellaneous

- Accessories' kit (2 lifting rings, 1 technical manual)
- Specific imprint (T14, demi-lune, pentagon, type A)
- Specific protective cover (Service key or captive key)
- Extra key

Other available options, see the pricelist.

- 1 Asphalt surface
- 2 Lost casing
- 3 PVC Ø100mm
- 4 Geotextile underlayer
- 5 Natural permeable soil
- 6 3000 PSI or 350 to 400 kg/m3 concrete
- 7 Drain: must be able to drain 20 litres of water in 5min