

BMVDMF75

Semi-automatic retractable bollard
VENDÔME 250x750

The semi-automatic retractable bollard is a system developed for very occasional access. For this reason it is recommended for situations with low access opening frequency.
The semi-automatic bollard is also the ideal access control solution in areas without an electricity supply.

Material: Cast iron cover and head

Dimensions: Ø250 mm - H750 mm **Weight:** 146 kg

Surface finish

316L stainless steel + Passivation (improves corrosion resistance) + Polished with satin finish
Class II reflective band (yellow)

Operazione

The bollard is moved using a **T11 Imprint** key which releases the mechanism.
One push on the head of the bollard is all it takes to make it descend to flush with the ground, where it automatically locks in position. Then, with a turn of the key, the bollard rises automatically and locks in the up position.

The key opening is protected by a bronze cover plate stopping the ingress of dust or gravel.

Reinforced push-to-release bar and lock bolt

In compliance with France's NFP98-310 standard

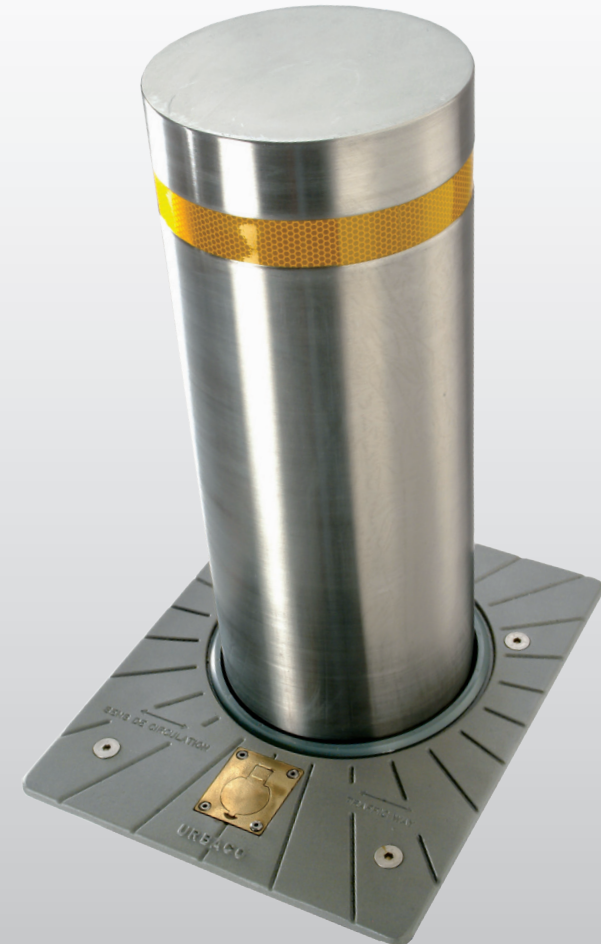
The chosen site must be out of the usual passage of vehicle wheels.

Options

- Choice of RAL paint colours
- Specific imprint (T14, demi-lune, pentagon, type A)
- Specific protective cover (Service key or captive key)
- Class II reflective band (red or yellow)
- Extra key
- Anti-vandalism screws

Accessories

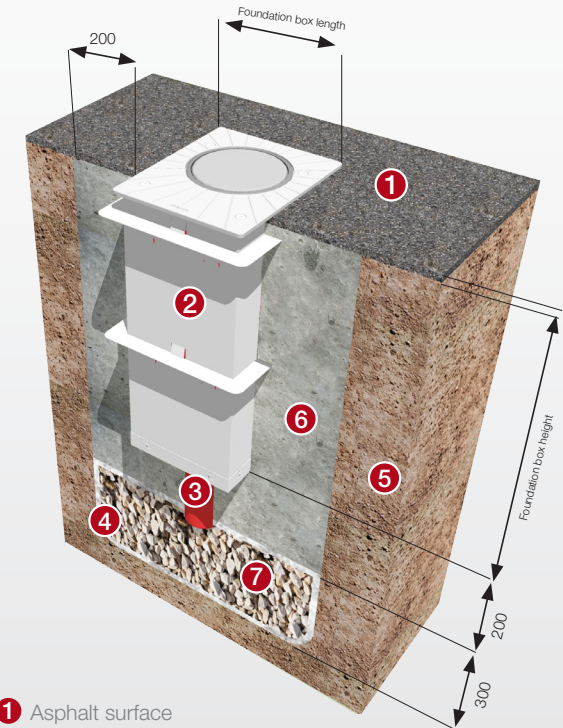
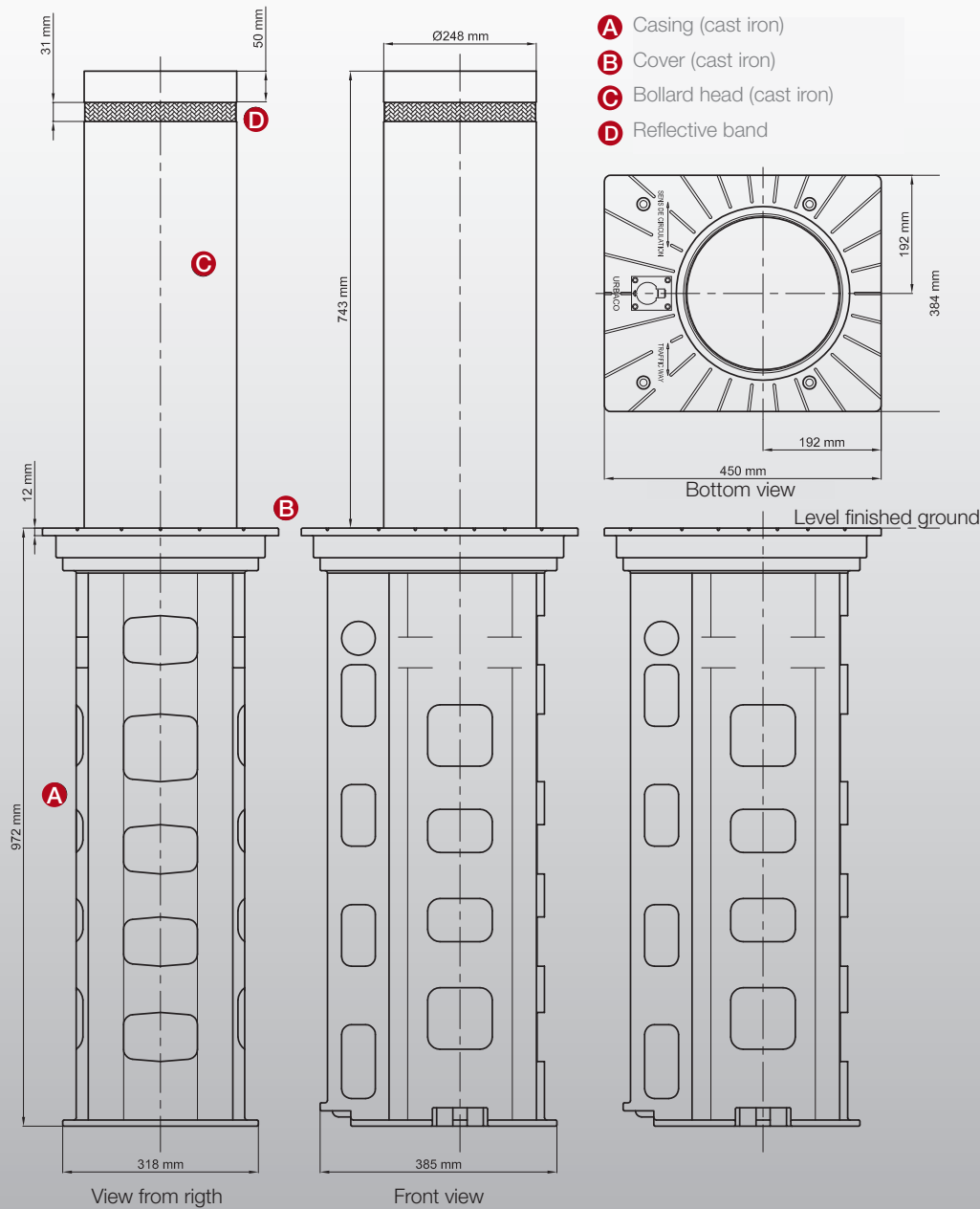
- Lost casing
- Accessories' kit (2 lifting rings, 1 technical manual)



Ministry of Infrastructure and Transport
Approval for installation on the public highway
Protocol No. 32658, of 1 April 2009

BMVDMF75

Semi-automatic retractable bollard
VENDÔME 250x750



- 1 Asphalt surface
- 2 Lost casing
- 3 PVC Ø100mm
- 4 Geotextile underlayer
- 5 Natural permeable soil
- 6 3000 PSI or 350 to 400 kg/m³ concrete
- 7 Drain: must be able to drain 20 litres of water in 5min